

WaterSaver Boundary PLV 701

WATER SAVER – BOUNDARY PVL 701

Features

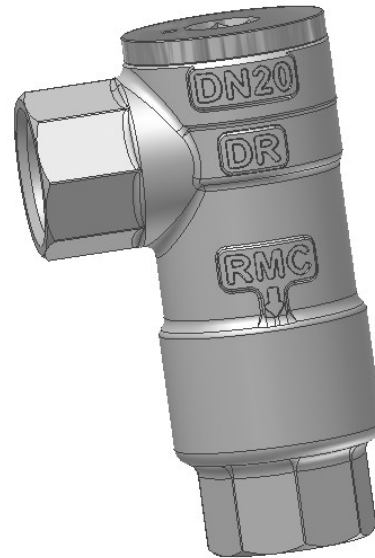
- * Cartridge design
- * Robust body for external installation
- * Maximum inlet pressure 2000 kPa
- * Set outlet pressure 500 kPa
- * Stainless steel seat
- * Standards marked to 1357.2

**Also available in standard
straight through
configuration for
underground services**

The *WaterSaver* Boundary PLV provides:

- * A long-life stainless steel seated mechanism, suitable for use in all water conditions (including hard water)
- * Field serviceability, through its field replaceable cartridge
- * Gunmetal body, incorporating right angle bend for simple installation in above ground services

Proven PRESSURE LIMITING VALVE



.....built TOUGH.

The *WaterSaver* Boundary PLV is a high flow pressure-limiting valve, designed for external installation on the meter service.

It has 20mm BSP connections, and is preset for a fixed outlet pressure of 500 kPa.

The Reliance *WaterSaver* Boundary PLV is of a modular construction with a field replaceable control cartridge.