

# MainsFerrule Ferule Cock

MAINSFERRULE - FERRULE COCK

## Features

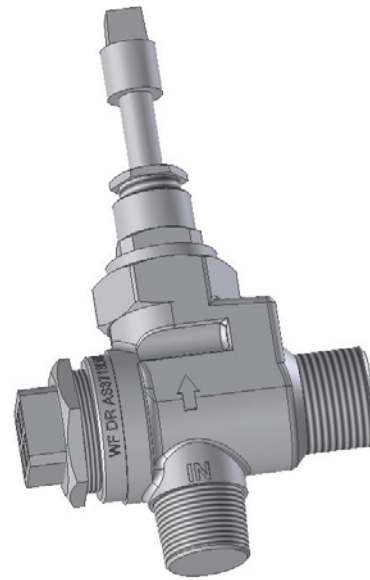
- \* Cast DR Brass Body
- \* Forged Bonnet or Cap assemblies
- \* Parallel plug design
- \* Standards Marked to AS 3718

The *MainsFerrule* range comes in sizes from 20mm to 50mm, in either Bonneted or Capped configurations.

### The *MainsFerrule* Range provides:

- \* A cost effective product solution for mains tapping for 20mm to 50mm connections
- \* Long life performance, through its high quality components
- \* Quality guaranteed Standards Marked product

## Proven MAINS TAPPING FERRULE COCKS....



...built TOUGH

The *MainsFerrule* Ferrule Cock Range delivers proven performance in a proven design.

The *MainsFerrule* range is supported by a number of outlet connections options including; bends (male iron, compression, and capillary) or with direct poly connectors.